

AutoCAD Electrical: 60 Tips in 60 Minutes

Tiffany Bachmeier / Robert Stein

AutoCAD Electrical Implementation Consultant / Sr. Implementation Consulting Manager

Join the conversation #AU2017



Class summary

On your mark...Get Set!...GO!

Back by popular demand, this fast paced class will keep you on your toes with brand new rapid fire tips and tricks and all-time favorites to get the most out of your time in AutoCAD Electrical.

Hold on tight, it's going to be a wild ride!

A graphic with a red and orange background, a grid pattern, and a glowing light effect. The text 'BREAKING NEWS ALERT' is prominently displayed in the center. 'BREAKING' and 'NEWS' are in white, and 'ALERT' is in yellow. There are faint, semi-transparent images of a crowd and a car in the background.

**BREAKING
NEWS ALERT**

2019 AutoCAD Electrical Virtual User Group



We will have Planned Topics, Guest Speakers, and open Q&A
Launch Date, Sign Up, & More Details @ <http://robertstein.blogspot.com/>

Key learning objectives

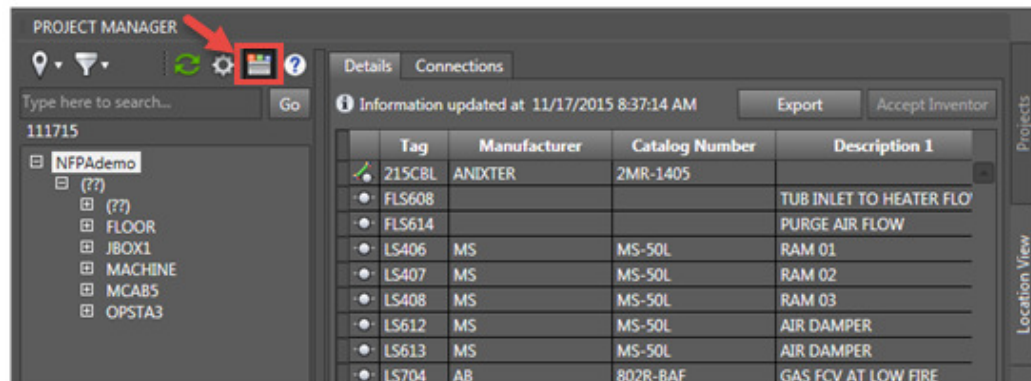
At the end of this class, you will have discovered:

- Project Management Tips and Tricks
- Drawing Creation Tips and Tricks
- Customization Tips and Tricks
- Template Tips and Tricks
- AND MANY MORE Tips and Tricks for Beginner, Intermediate, and Advanced AutoCAD Electrical enthusiasts

Project Management Tips

1. Project Level Node in the Location View Tab (2017)

- Select this node when you want to view or export the entire project from the Details and Connections panels.



2. Security Updates (2017)

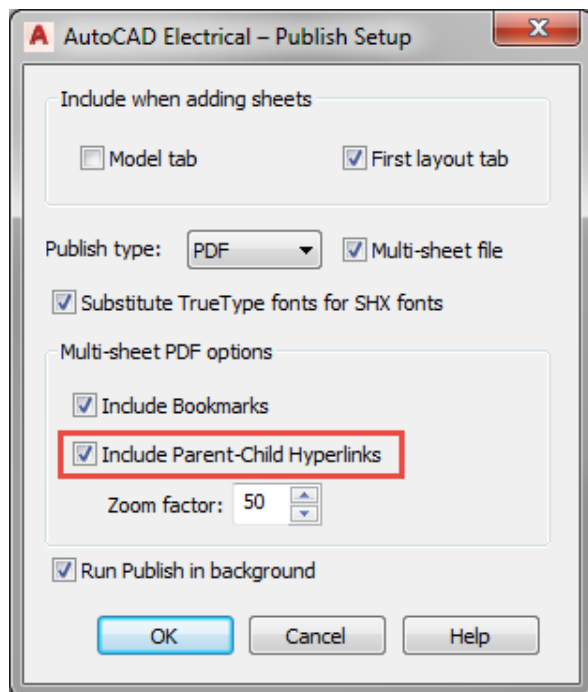
- To minimize the possibility of loading and executing malicious code, some files previously installed in the public folder, *C:\Users\Public\Documents\Autodesk\Acade {version}\Support\{language code}*, are now installed in *C:\Program Files\Autodesk\AutoCAD {version}\Acade\Support\{language code}\Shared*

Project Management Tips

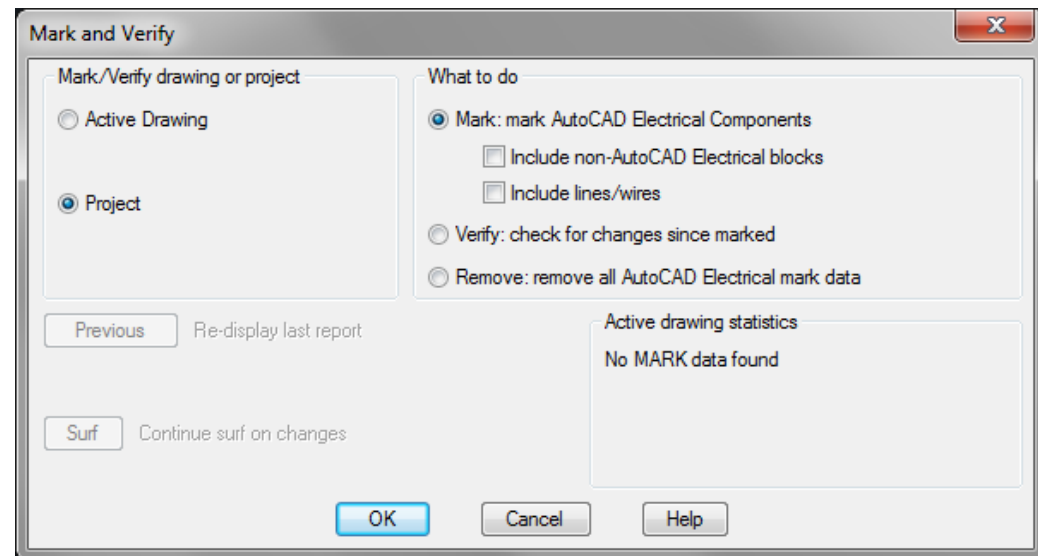
3. Publish to PDF with Hyperlinks!

(Publish in general is a great tool!!

It will save an immense amount of time!)

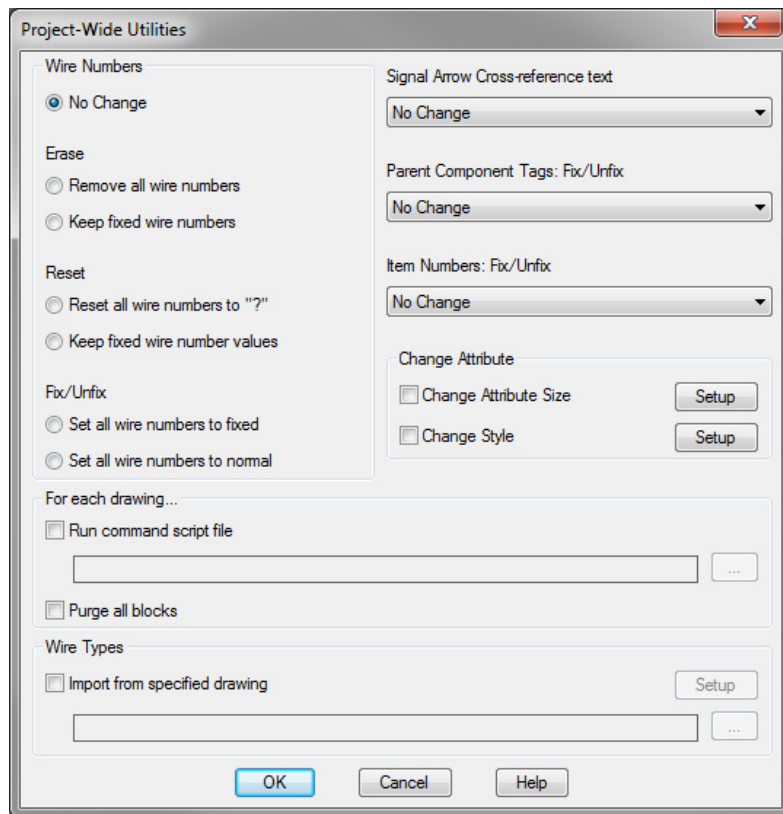


4. Mark/Verify

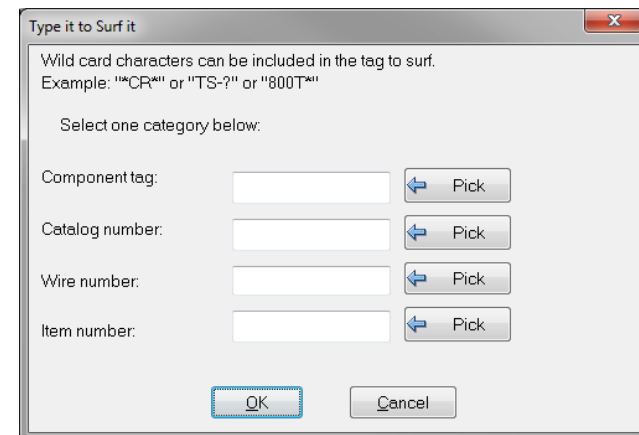


Project Management Tips

5. Project Utilities

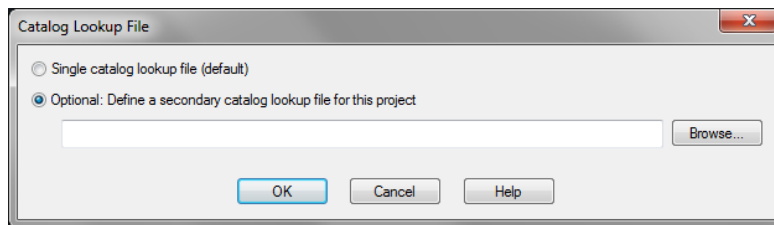


6. Surfer: "enter" to trace



Project Management Tips

7. Secondary Catalog Database to search in a Project



8. Use relative paths in your project properties so that your libraries connect regardless of which release of ACADE or version of windows you have.

```
+ [1] %SL_DIR%\NFPA; %SL_DIR%\NFPA\1-; %SL_DIR%\pneu_iso125/; %SL_DIR%\hyd_iso125/; %SL_DIR%\pid/  
+ [2] ACE_NFPA_MENU.DAT  
+ [3] %SL_DIR%\panel/  
+ [4] ACE_PANEL_MENU.DAT
```

Project Management Tips

9. Title Block Update command/default.wdu

Update Title Block

Select Line(s) to Update (Project Description Lines)

<input checked="" type="checkbox"/> Title 1:	AutoCAD Electrical	<input checked="" type="checkbox"/> LINE13	(blank)
<input checked="" type="checkbox"/> Title 2:	Essentials NFPA	<input checked="" type="checkbox"/> LINE14	(blank)
<input checked="" type="checkbox"/> Title 3:	AU 2017	<input checked="" type="checkbox"/> LINE15	(blank)
<input checked="" type="checkbox"/> Job Number:	12345	<input checked="" type="checkbox"/> LINE16	(blank)
<input checked="" type="checkbox"/> Date:	11/16/17	<input checked="" type="checkbox"/> LINE17	(blank)
<input checked="" type="checkbox"/> Engineer:	TB	<input checked="" type="checkbox"/> LINE18	(blank)
<input checked="" type="checkbox"/> Drawn By:	TB	<input checked="" type="checkbox"/> LINE19	(blank)
<input checked="" type="checkbox"/> Checked By:	TB	<input checked="" type="checkbox"/> LINE20	(blank)
<input checked="" type="checkbox"/> Scale:	1:2	<input checked="" type="checkbox"/> LINE21	(blank)
<input checked="" type="checkbox"/> LINE10	(blank)	<input checked="" type="checkbox"/> LINE22	(blank)
<input checked="" type="checkbox"/> LINE11	(blank)	<input checked="" type="checkbox"/> LINE23	(blank)
<input checked="" type="checkbox"/> LINE12	(blank)	<input checked="" type="checkbox"/> LINE24	(blank)

Select All Clear All < < > >

Save

Select line(s) to update (these are per-drawing values)

<input checked="" type="checkbox"/> Drawing Description:	<input checked="" type="checkbox"/> 1 <input checked="" type="checkbox"/> 2 <input checked="" type="checkbox"/> 3	<input type="checkbox"/> P <input type="checkbox"/> I <input type="checkbox"/> L (%P,%I,%L values)
<input type="checkbox"/> Drawing Section:	(blank)	<input checked="" type="checkbox"/> Drawing (%D value)
<input type="checkbox"/> Drawing Sub-section:	(blank)	<input checked="" type="checkbox"/> Sheet (%S value) <input type="checkbox"/> Previous (%S value) <input type="checkbox"/> Next (%S value)
<input type="checkbox"/> Filename:	AU_2017_NFPA_04 <input type="checkbox"/> Upper case	<input checked="" type="checkbox"/> Sheet maximum: 10
<input type="checkbox"/> File/extension:	AU_2017_NFPA_04.dwg	<input type="checkbox"/> Resequence sheet %S values 1 Start
<input type="checkbox"/> Full Filename:	D:\Tff...\AU_2017_NFPA_04.dwg	

Activate each drawing to process

OK Active Drawing Only OK Project-wide Cancel Help Wide>

Drawing Creation Tips

10. Do NOT Explode (or BURST)

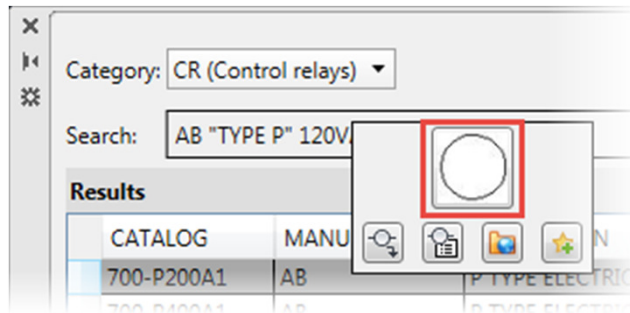


11. NFPA Symbol Library Update (2018)

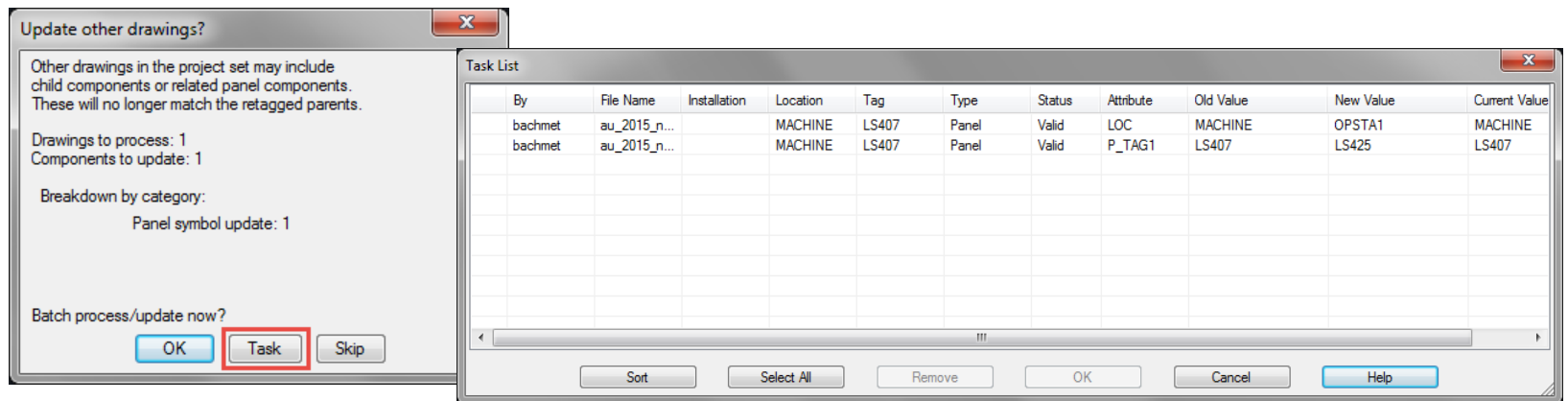
- The default device designation for some symbols in the NFPA library are updated to meet the new NFPA 79 2015 standards

Drawing Creation Tips

12. Insert components direct from Catalog Browser



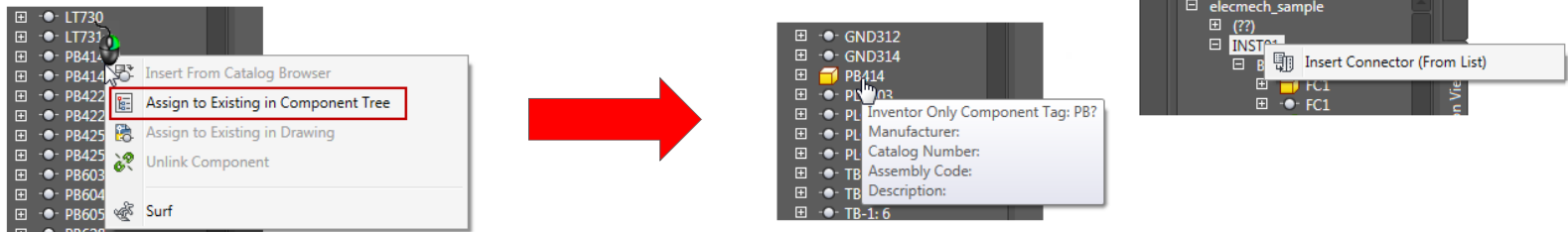
13. Task List



Drawing Creation Tips

14. Insert and Link Inventor Connector in the Location View Tab or Link ACAD Components to their respective Inventor Parts in the Location View Tab (2017)

- Select any node or a specific connector in the tree and right-click to insert.

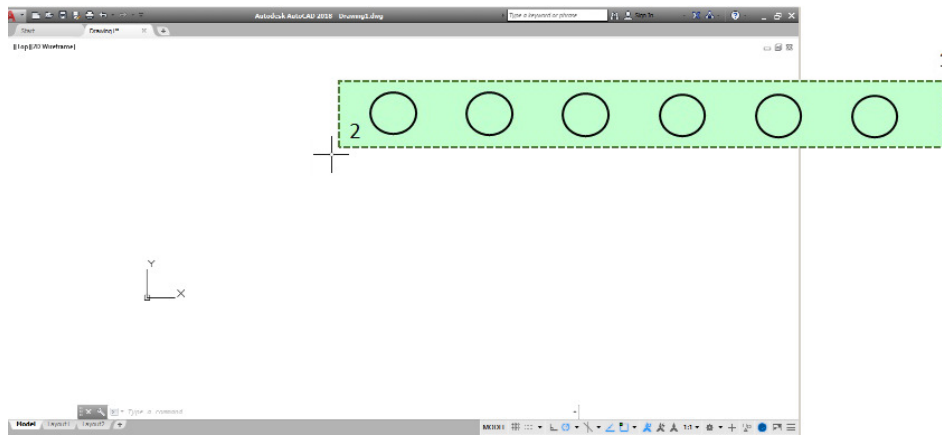


15. Save Circuit to the Icon Menu will save all of your attribute data, so everything is already filled out when you insert it. Time Saver!

Drawing Creation Tips

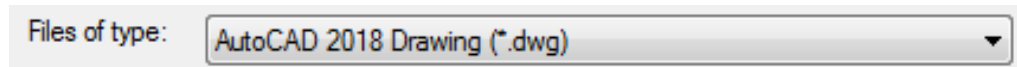
16. SELECTIONOFFSCREEN System Variable (2018)

- Allows you to select objects that are off-screen



17. DWG Format Update (2018)

- Has improvements in the efficiency of open and save operations



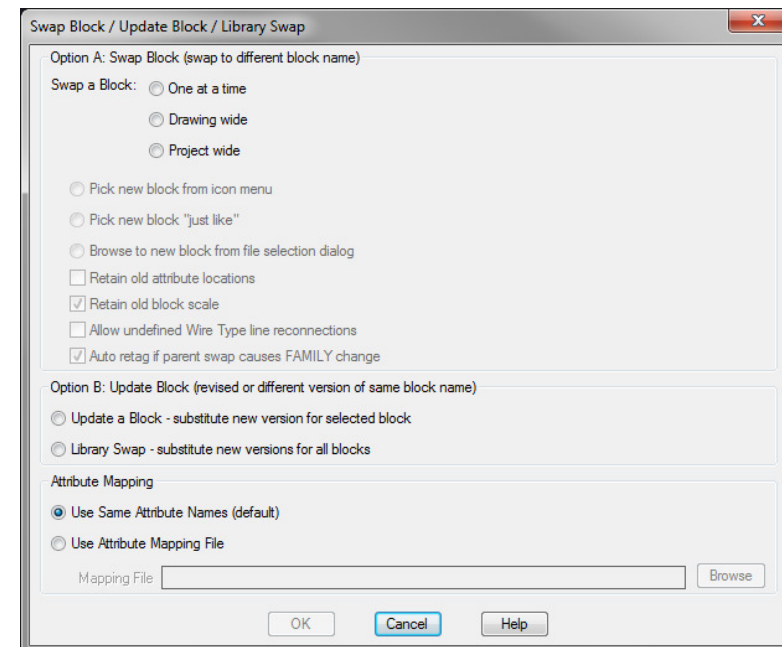
Drawing Creation Tips

18. Swap/Update Block (2018)

- Issues that could cause system crashes have been fixed.
- Project-wide block swapping performance improvements

19. Connectors (2018)

- Inserting now hides cross-references, unless specifically requested to show

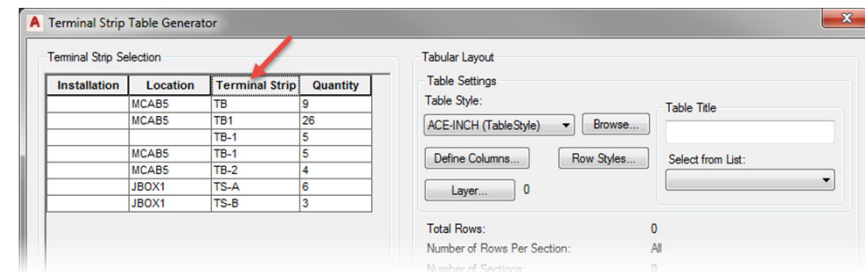


Drawing Creation Tips

20. Editing terminal footprints has been enhanced to support multiline attributes. (2018)

21. The Edit Wire Sequence dialog box issues have been fixed for direct to terminal connections (2018)

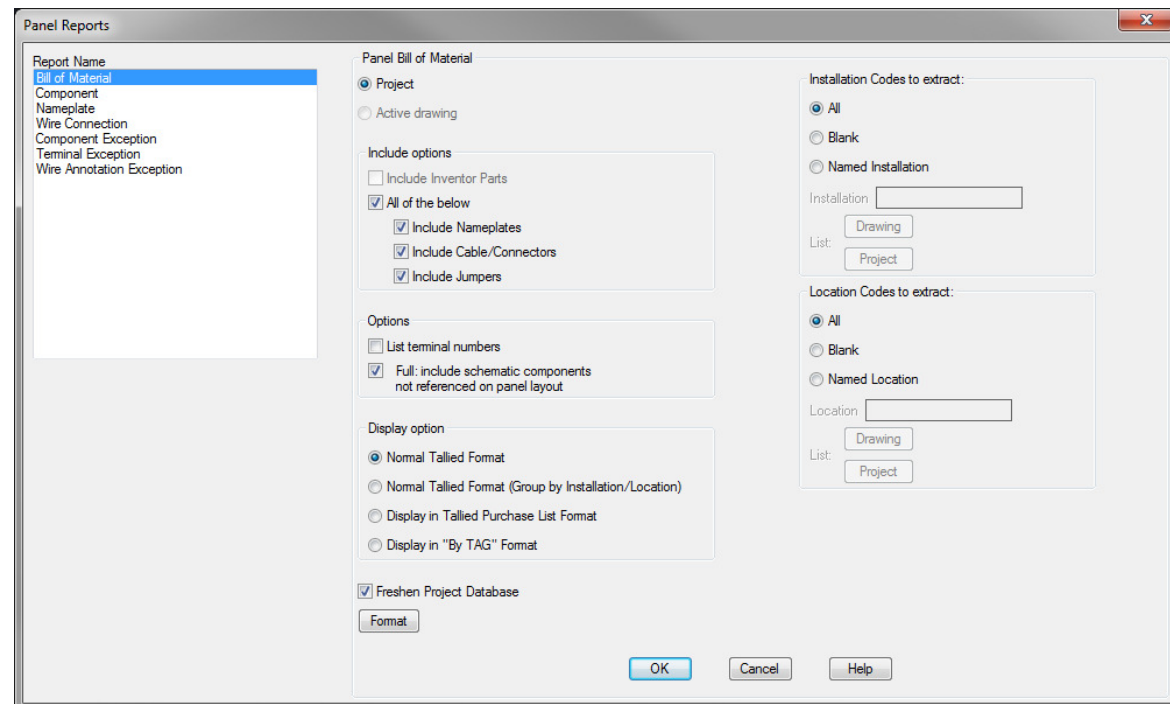
22. Terminal Strips can be sorted in the in the Table Generator by clicking the column heading and they are generated in the sort order (2017)



Drawing Creation Tips

23. Manufacturer and Catalog Number in the DIN Rail dialog box can now support long strings. (2018)

24. Subassembly details from the secondary catalog database are now supported in Bill of Material Reports. (2018)



Drawing Creation Tips

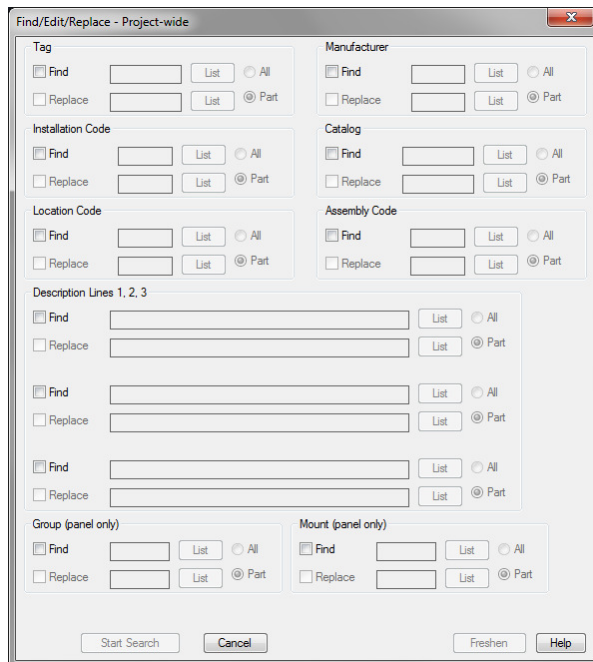
25. Align



26. Toggle NO/NC



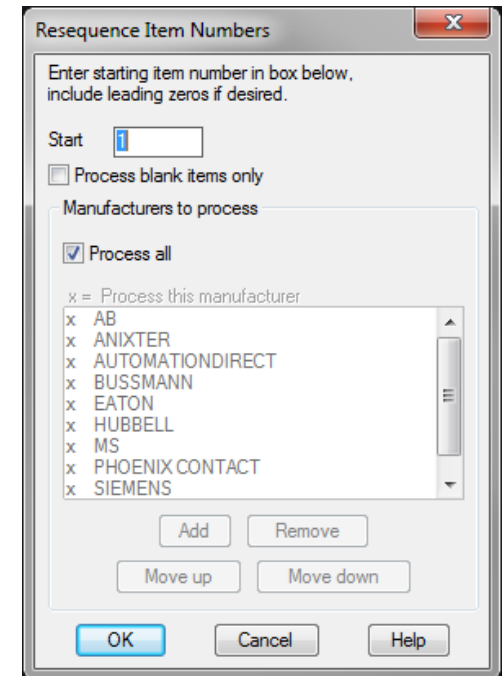
27. Find/Edit/Replace Component Text



Drawing Creation Tips

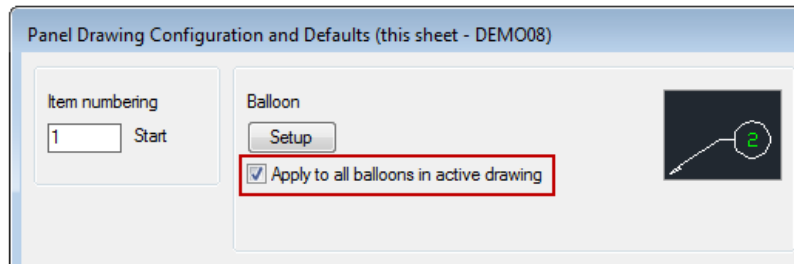
28. Resequence Item Numbers Updates (2017)

- Drawings are no longer opened for processing, improving the performance.
- The manufacturers are sorted across the project, not per drawing.
- The entire project is always processed, keeping item numbers in sync for components with the same catalog.
- The project property, Reset with each Drawing, has been removed and is no longer valid

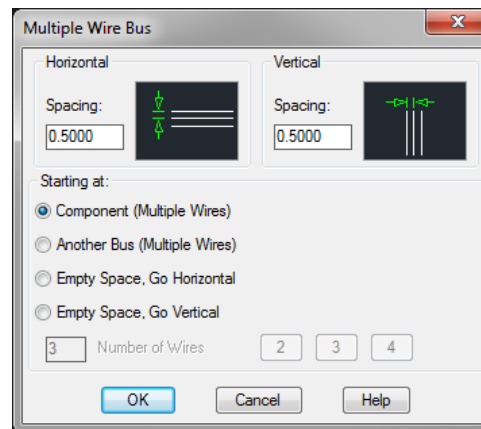


Drawing Creation Tips

29. Item Number Balloon Update (2017)

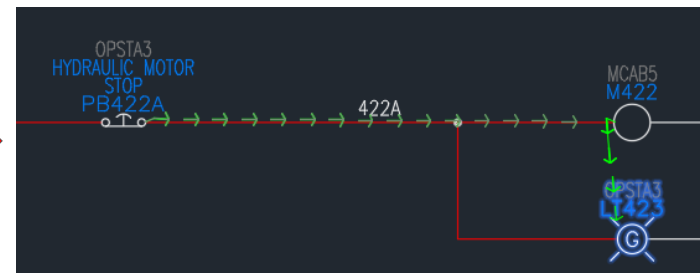
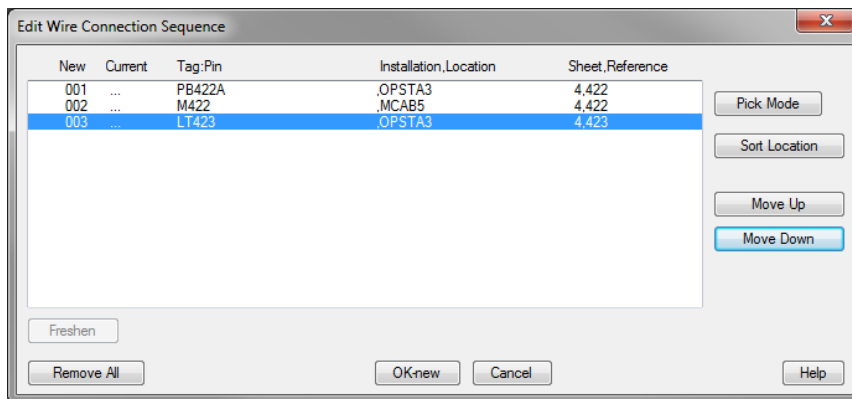


30. Multiple Bus to a component with Continue & Flip options



Drawing Creation Tips

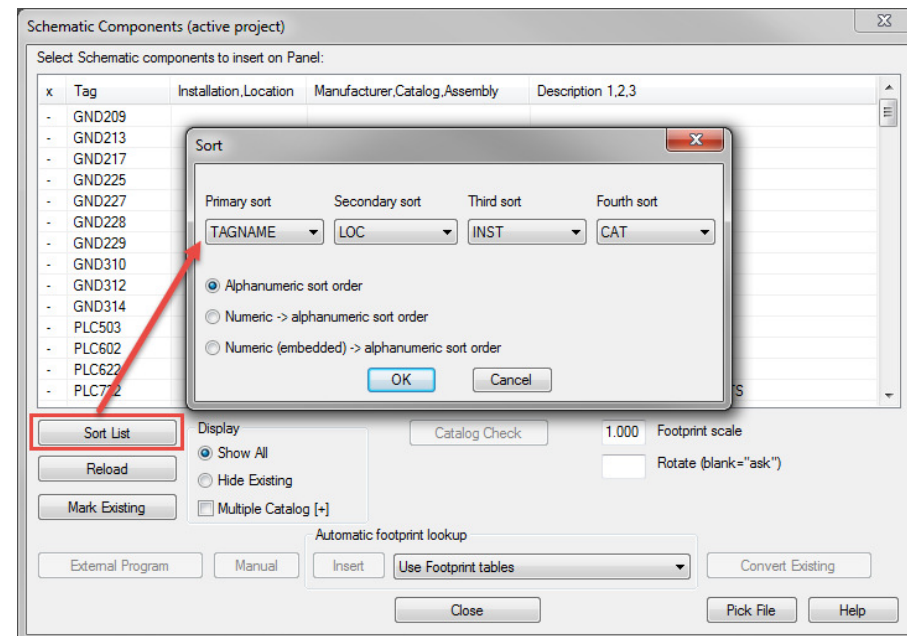
31. When you add/edit signal arrows the related Source & Destination arrows are automatically updated on other drawings (2017)
32. Wire Sequencing (info lives on symbol in the wire connection attribute as xdata so it sticks even if you delete the wires)



Drawing Creation Tips

33. Installation, Location, & Tag attribute values support up to 255 characters each. (2017)

34. Insert from Schematic List saves sort settings now across sessions (2017)



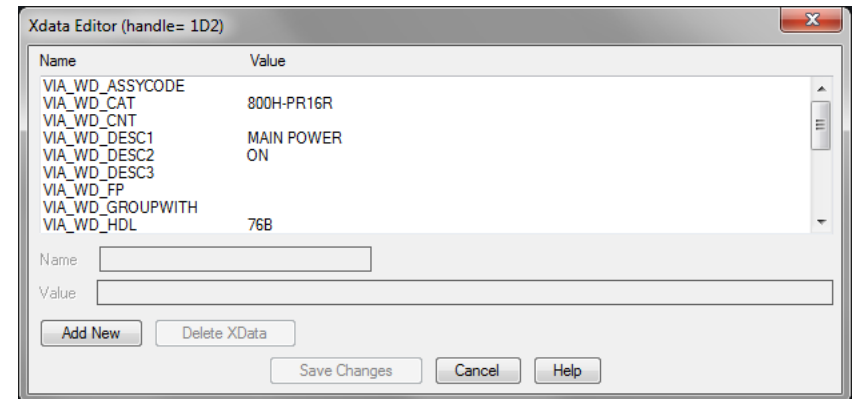
Drawing Creation Tips

35. ACADEX & ACADEXA

- View Xdata assignments found on selected entity or on selected attribute of a block

36. AEXDATA

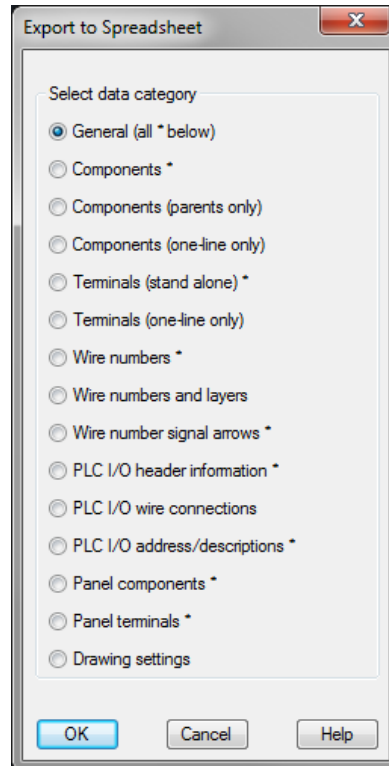
- View/Modify/Add/Delete Xdata on block or on attribute of block



Drawing Creation Tips

37. ATTMODE

- 2 to make all invisible attributes visible
- 1 to flip back to normal
- This can also be done with ATTDISP

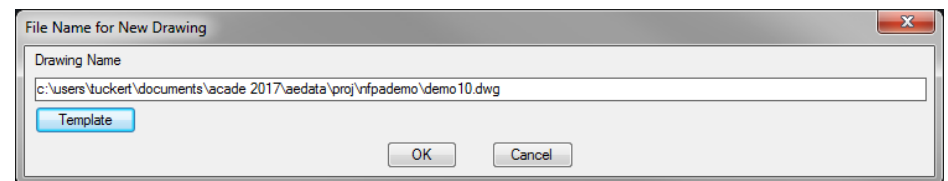
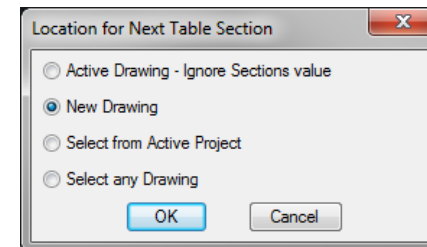
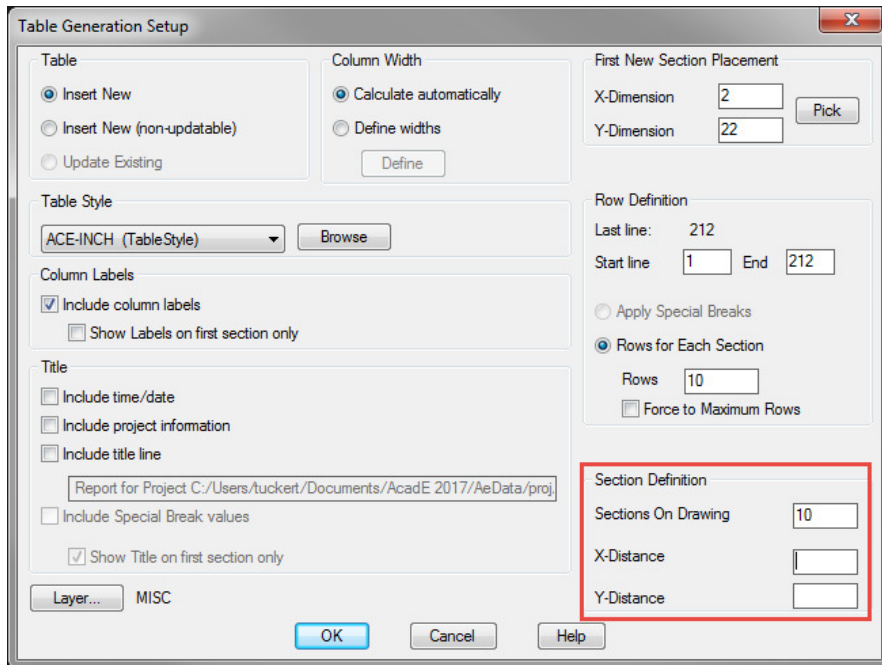


38. Export/Import from Spreadsheet

- Note: do NOT edit the drawings before you import changes back in

Drawing Creation Tips: Reports

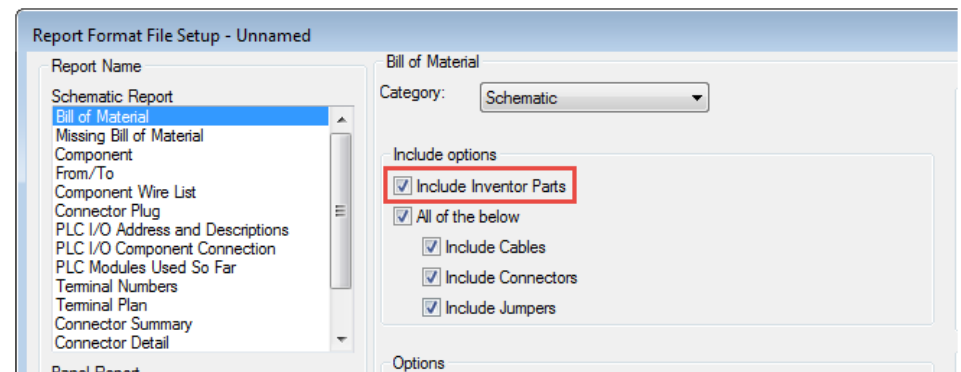
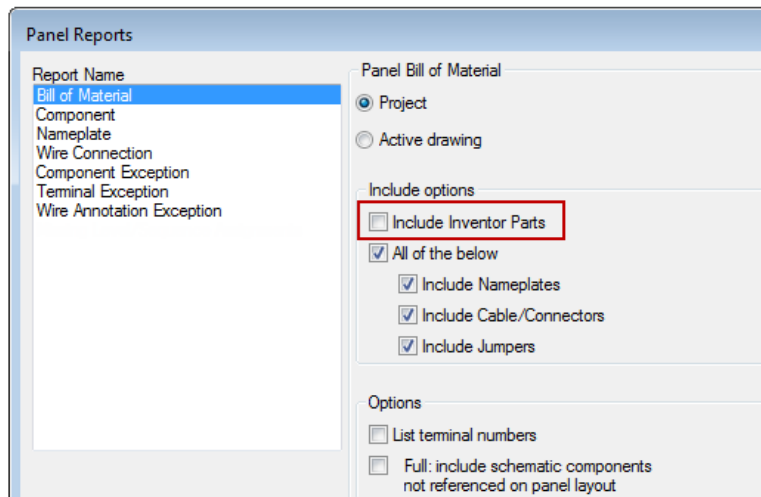
39. Multi-page Report generation



Drawing Creation Tips: Reports

40. AutoCAD Electrical and Inventor Combined Bill of Material Report (2017)

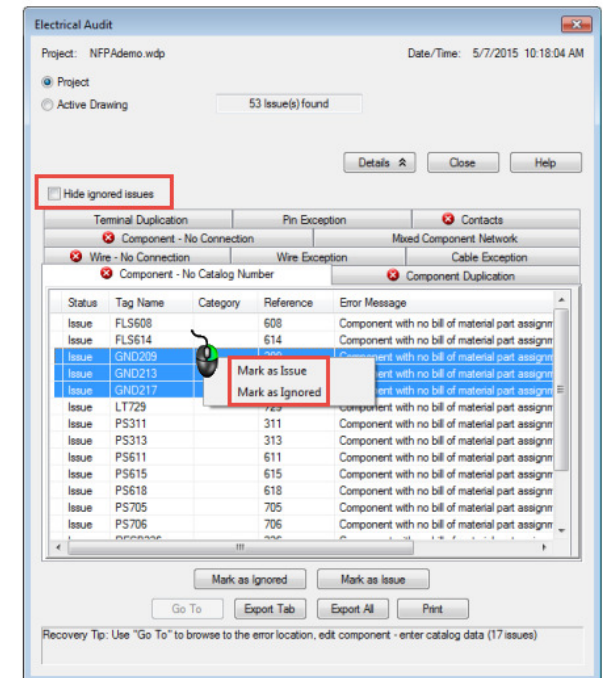
- **Tip:** This option is also available in the Report Format File Setup for saving your SET files.



Drawing Creation Tips: Reports

41. Ignore errors in Electrical Audit (2017)

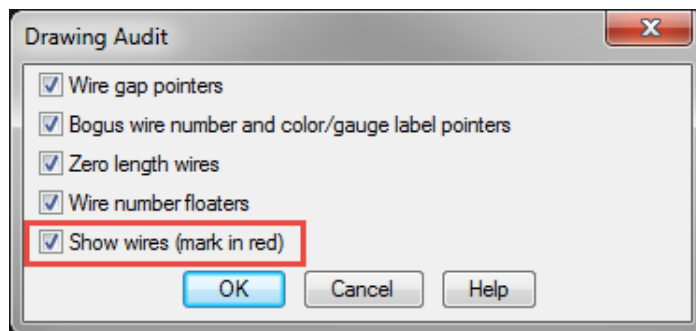
- **Tip:** Top 3 warnings:
 - Wire No Connection for missing Source/Destination Signals
 - Component No Catalog Number for missing BOM info
 - Child No Connection for missing parent/child relationships



Drawing Creation Tips: Reports

42. DWG Audit

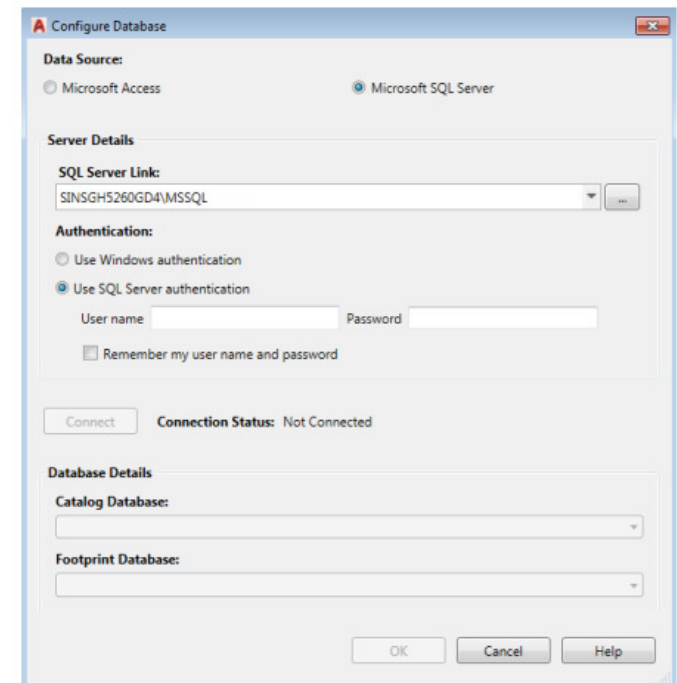
- Tip: You get the bonus option to “Show wires” when running the DWG Audit on the Active Drawing.



Customization Tips

43. SQL Server & Access Database options available now (2017)

- Deployment Mode/Autodesk Content Migration Utility
 - Connect to your already created SQL Server instance or create one using the Autodesk Content Migration Utility for AutoCAD Electrical
- Standalone Mode
 - Use the Configure Catalog Database command that allows you to connect, and then select your catalog and footprint databases on an SQL Server instance.



Customization Tips

44. New SQL Server Options (2018)

- SQL Content Migration Utility
 - now migrates user-defined tables from Access to SQL Server
 - Support for Unicode has been enhanced for catalog data in SQL mode

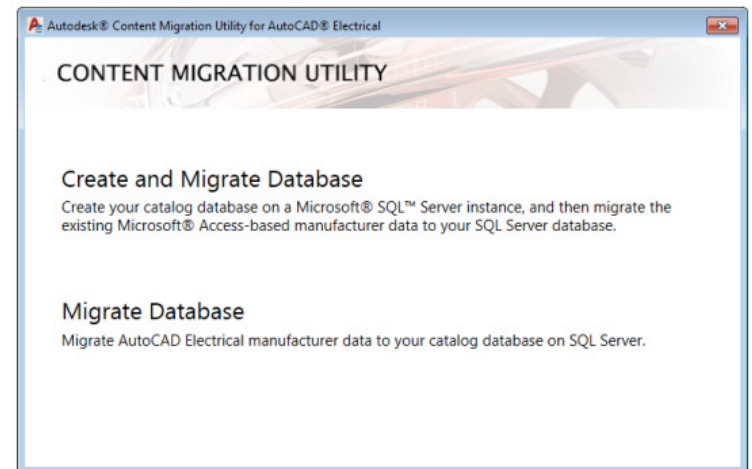
Catalog Content SQL Configuration

Add Microsoft® SQL™ Server Configuration Details

SQL Server Link:

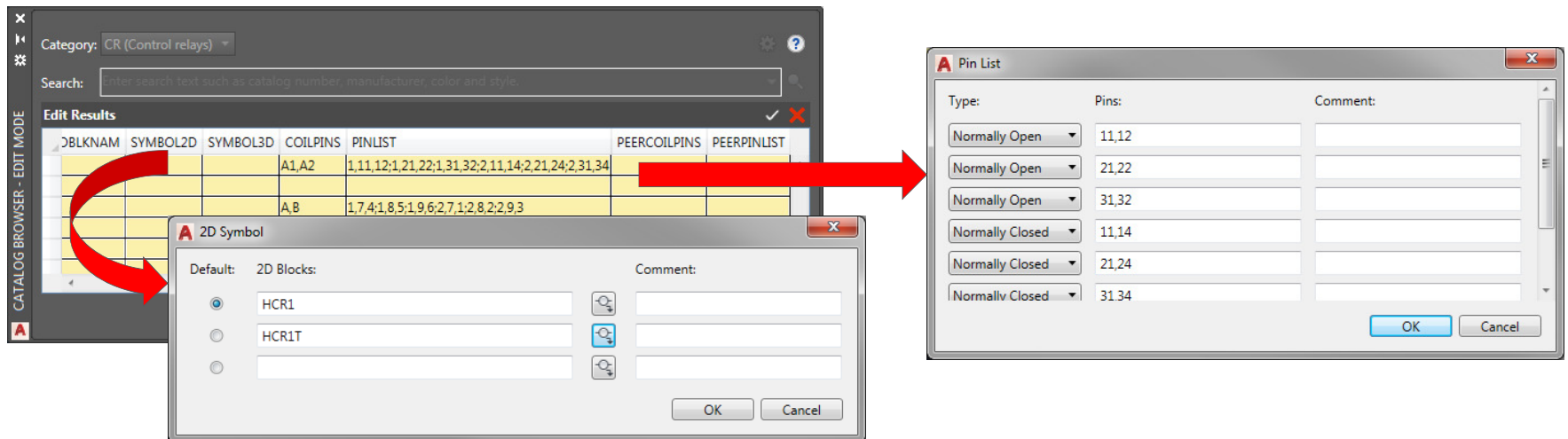
Authentication mode:
 Use Windows authentication
 Use SQL Server authentication
Users will connect using their SQL Server credentials upon product launch.

Database Details
Connect to Catalog database:
Connect to Footprint database:



Customization Tips

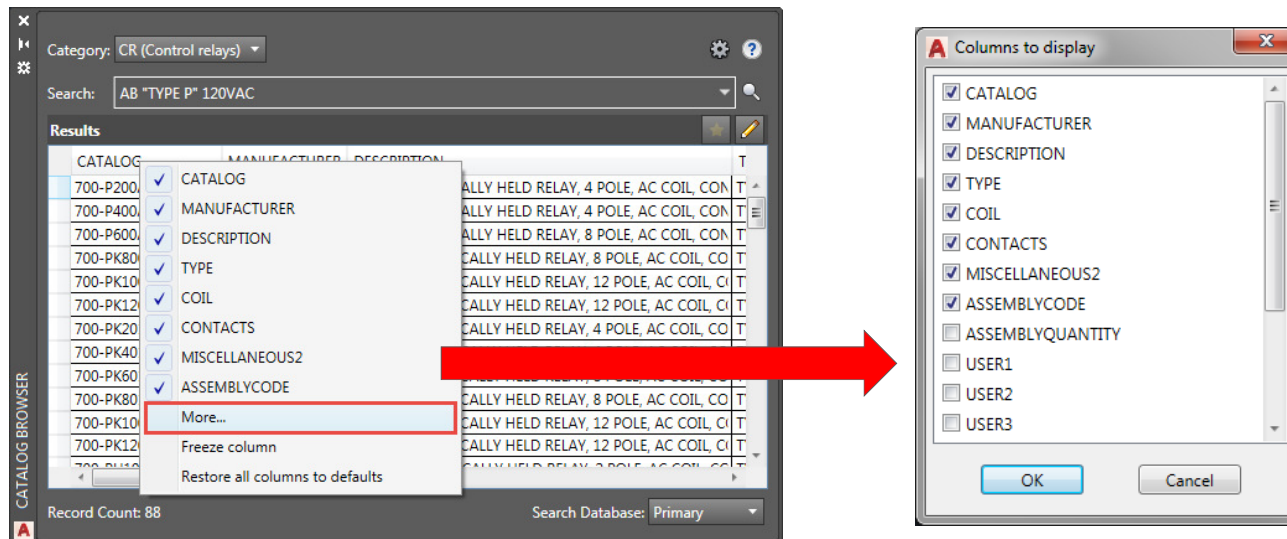
- 45. In the Catalog Browser, for a given part number, you can actually define more than just one 2D or one 3D (Inventor part) library symbol to use
- 46. Add new Part Numbers plus Pin Lists or Terminal Properties in new Catalog Browser at the same time



Customization Tips

47. Make additional Catalog Database columns visible to include in Part Number Searches

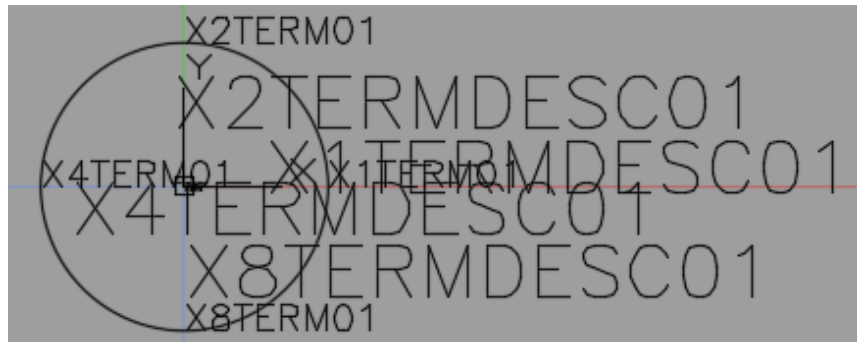
- RMB on any column in the Catalog Browser



Customization Tips

48. Wire Connection Attributes

- X_TERM_ _
 - Wires know to connect into a component buy this invisible attribute sitting on the component where the origin of the attribute text attaches
 - The first “_” is a number to specify which direction the wire is coming from
 - 1 = Wire coming in from the Right
 - 2 = Wire coming in from the Top
 - 4 = Wire coming in from the Left
 - 8 = Wire coming in from the Bottom
 - 0 = Radial



Customization Tips

49. Naming Conventions

- Schematic Symbols
 - First: H or V for Horizontal or Vertical
 - Second & Third: 2 character family code
 - Fourth: **1** (Parent/Standalone) or **2** (Child)
 - Fifth: **1** (Normally Open) or **2** (Normally Closed)
 - All other characters are user defined unique identifiers
 - 32 Characters max
 - **TIP:** Do not use "HH", "HV", "VH", or "VV" as the first two characters of a symbol block name.



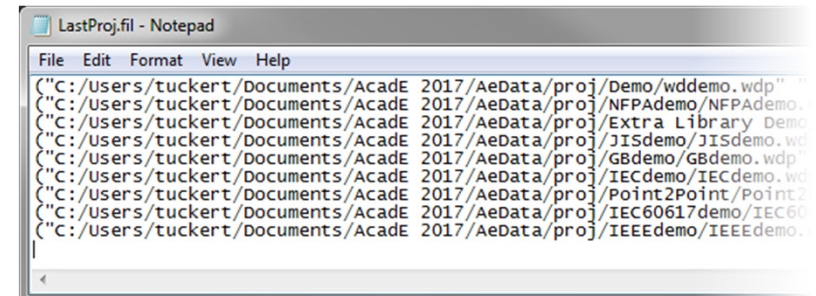
Customization Tips

50. Symbol Builder & Attribute Templates (Drag & Drop)



51. Lastproj.fil text file

- In the User Support folder
- List of recent projects
- Each line in this file gives the following information for each project:
 - Project name and path
 - Project descriptions 1-4
 - Project state: "2"=Active"1"=Open"0"= not open but available from the Recent Projects dialog box



```
File Edit Format View Help
("C:/Users/tuckert/Documents/AcadE 2017/AeData/proj/Demo/wddemo.wdp"
"C:/Users/tuckert/Documents/AcadE 2017/AeData/proj/NFPAdemo/NFPAdemo.
"C:/Users/tuckert/Documents/AcadE 2017/AeData/proj/Extra Library Demo
"C:/Users/tuckert/Documents/AcadE 2017/AeData/proj/JISdemo/JISdemo.wd
"C:/Users/tuckert/Documents/AcadE 2017/AeData/proj/GBdemo/GBdemo.wdp"
"C:/Users/tuckert/Documents/AcadE 2017/AeData/proj/IECdemo/IECdemo.wd
"C:/Users/tuckert/Documents/AcadE 2017/AeData/proj/Point2Point/Point2
"C:/Users/tuckert/Documents/AcadE 2017/AeData/proj/IEC60617demo/IEC60
"C:/Users/tuckert/Documents/AcadE 2017/AeData/proj/IEEEdemo/IEEEdemo.
```

Customization Tips

52. Spreadsheet to PLC Tips

- **NEW_DWG** in Code column to make it skip to next drawing
- **BREAK** in the Address column to break the PLC module and continue in the next ladder column
- **SPACER** in the Address column to skip a rung before continuing to insert the next I/O point
- **SKIP** in the Code column to make the PLC module skip a ladder and continue in the next ladder

	A	B	C	D	E	F	G
1	CODE	R1	S2	G3	ADDR	RTP	D
2	1771-IAD	1	2	0	I:002/00	TB20	B
3					I:002/01		B
4					I:002/02		B
5					I:002/03		B
6					I:002/04		T
7					I:002/05		T
8					I:002/06		S
9					I:002/07		C
10					I:002/10		I
11					SPACER		
12					I:002/11		A
13					I:002/12		A
14					I:002/13		P
15					I:002/14		C
16					I:002/15		S
17					I:002/16		S
18					SPACER		
19					I:002/17		S
20	NEW_DWG						
21							
22	1771-IAD	1	2	1	I:003/00	TB21	F
23					I:003/01		F

Customization Tips

- 53. If you intend to share the major support files with other team members, utilize the Network Installation tools inside the installation configuration.
- 54. If you use your own part numbers in association with Manufacturer catalog numbers, the User Fields are great places to put those and now you can search on them directly from the new Catalog Browser

Category: CR (Control relays) ?

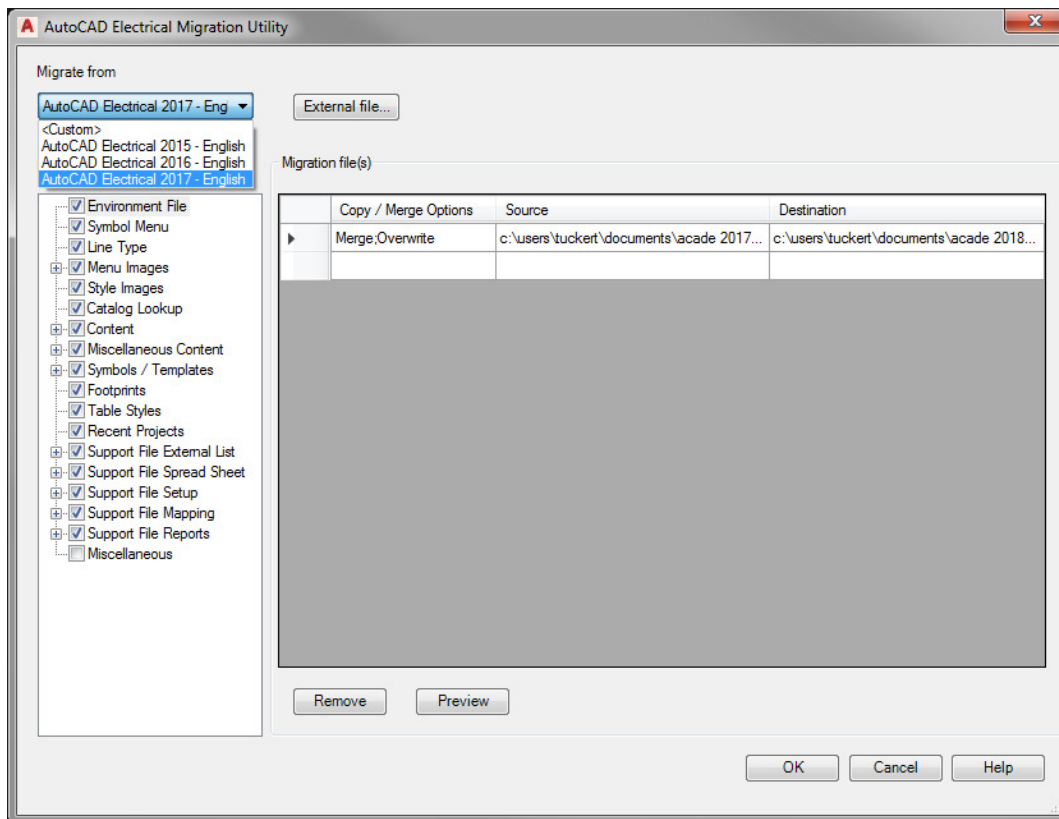
Search:

Edit Results ✓ ✗

CATALOG	MANUFACTURER	DESCRIPTION	TYPE	COIL	CONTACTS	MISCELLANEOUS2	ASSEMBLYCODE	ASSEMBLYLIST	ASSEMBLYQUANTITY	USER1	USER2	USER3	TE
100-FA02	AB	AUXILIARY CONTACT, FRONT MOUNT 2 NC	AUXILIARY CONTACT	FRONT MOUNT	2 NC	ADDER DECK USED WITH 700-CF RELAYS							
100-FA11	AB	AUXILIARY CONTACT, FRONT MOUNT 1 NO 1 NC	AUXILIARY CONTACT	FRONT MOUNT	1 NO 1 NC	ADDER DECK USED WITH 700-CF RELAYS							
100-FA20	AB	AUXILIARY CONTACT, FRONT MOUNT 2 NO	AUXILIARY CONTACT	FRONT MOUNT	2 NO	ADDER DECK USED WITH 700-CF RELAYS							
100-FA22	AB	AUXILIARY CONTACT, FRONT MOUNT 2 NO 2 NC	AUXILIARY CONTACT	FRONT MOUNT	2 NO 2 NC	ADDER DECK USED WITH 700-CF RELAYS							
100-FA31	AB	AUXILIARY CONTACT, FRONT MOUNT 3 NO 1 NC	AUXILIARY CONTACT	FRONT MOUNT	3 NO 1 NC	ADDER DECK USED WITH 700-CF RELAYS							
100-FA40	AB	AUXILIARY CONTACT, FRONT MOUNT 4 NO	AUXILIARY CONTACT	FRONT MOUNT	4 NO	ADDER DECK USED WITH 700-CF RELAYS							
100-FAL22	AB	AUXILIARY CONTACT, FRONT MOUNT 2 NO 2 NC	AUXILIARY CONTACT	FRONT MOUNT	1 NO 1 NC	ADDER DECK USED WITH 700-CF RELAYS (LATEBREAK / EARLY MAKE)							

Customization Tips

55. If you have customized your ACADE, use the Migration Utility when upgrading to a new release



Template Tips

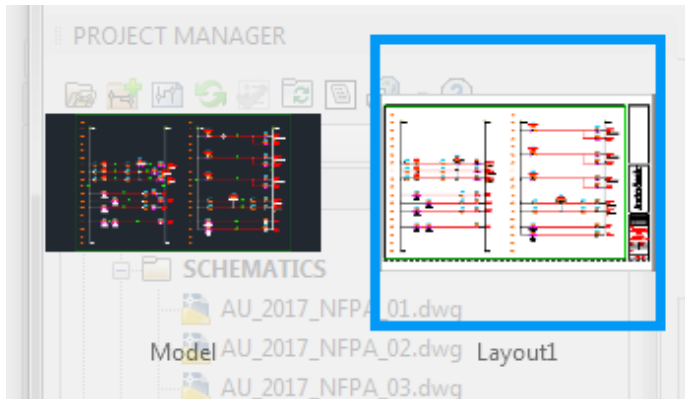
56. Utilizing the support files for default description values, location and installation codes is a great way to standardize throughout a company.

- Description File: wd_desc.wdd
- Installation Codes: default.inst
- Location Codes: default.loc
- Project Line Labels File
(default_wdttitle.wdl)
- Title Block Mapping File (default.wdt)

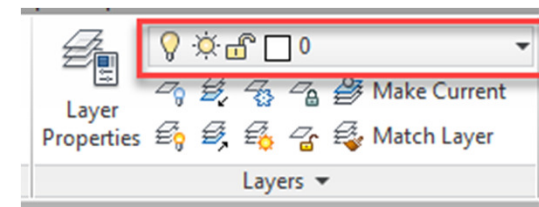
Template Tips

57. Utilize Paper Space, it will make Publishing easier!

- Note: Do NOT put your entire project in one drawing!



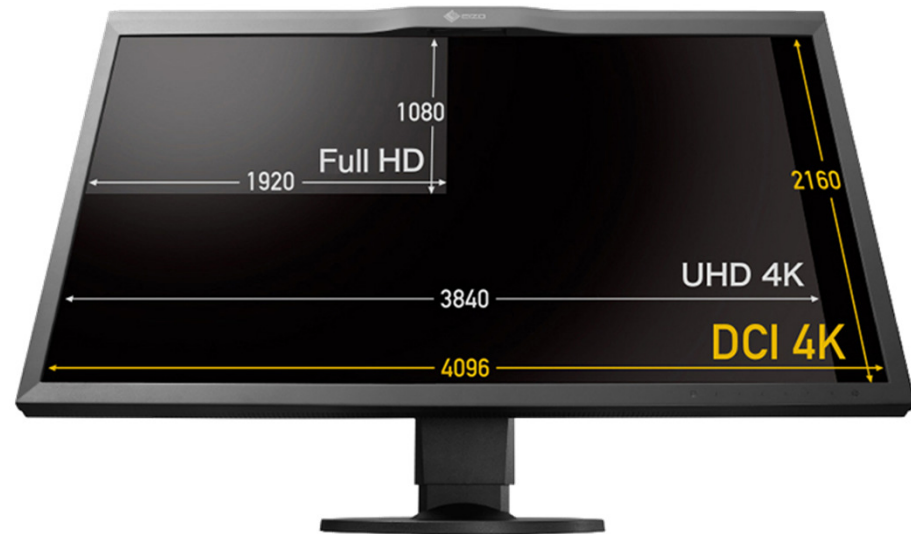
58. Always save your templates with Layer 0 as the Current Layer



General Tips

59. High Resolution (4K) Monitor Support (2018)

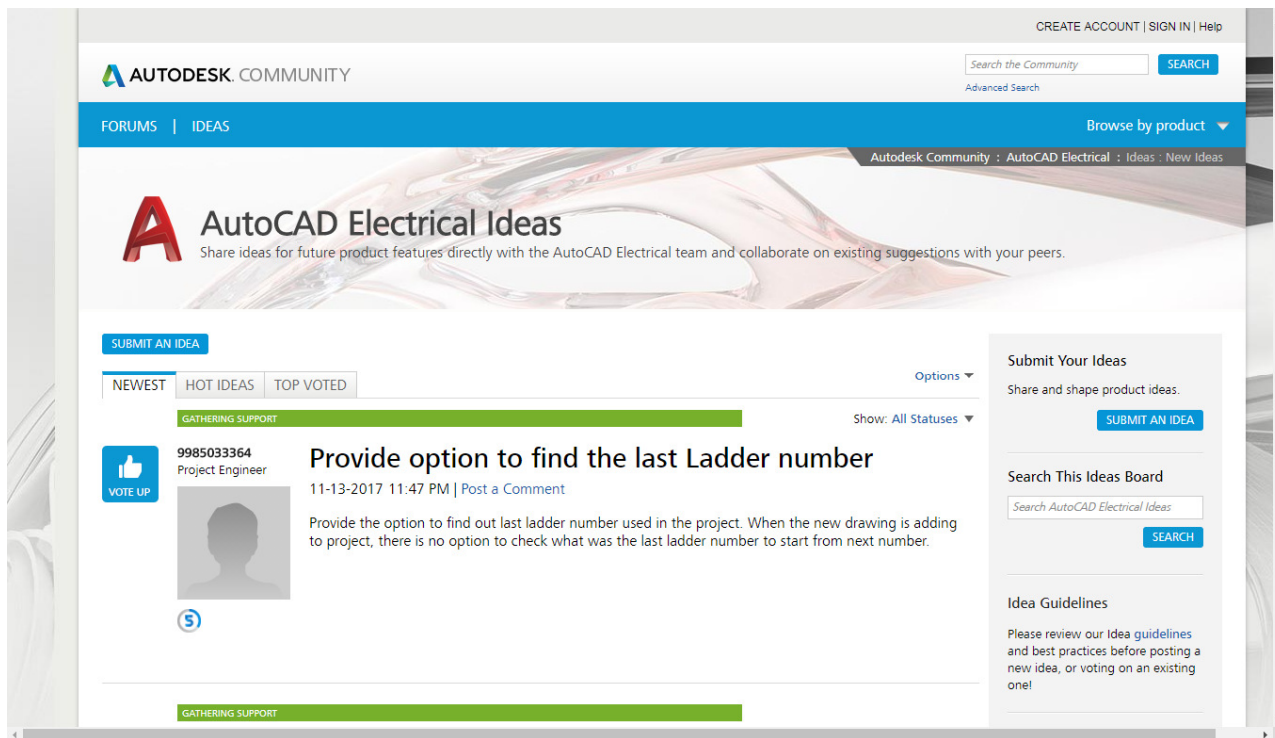
- The following dialog boxes and palettes scale correctly when you increase the text size in Windows display properties
 - Project Manager Palette
 - Symbol Builder Palette
 - Terminal Strip Editor
 - Set Wire type dialog



General Tips

60. AutoCAD Electrical's IdeaStation:

<https://forums.autodesk.com/t5/autocad-electrical-ideas/idb-p/37/tab/most-recent>



The screenshot displays the Autodesk Community forum page for AutoCAD Electrical Ideas. At the top, there are navigation links for 'FORUMS' and 'IDEAS', along with a search bar and a 'Browse by product' dropdown. The main header features the 'AutoCAD Electrical Ideas' logo and a brief description: 'Share ideas for future product features directly with the AutoCAD Electrical team and collaborate on existing suggestions with your peers.' Below this, there is a 'SUBMIT AN IDEA' button and a list of sorting options: 'NEWEST', 'HOT IDEAS', and 'TOP VOTED'. A green bar indicates 'GATHERING SUPPORT'. The main content area shows a post by user '9985033364', a Project Engineer, titled 'Provide option to find the last Ladder number'. The post was made on 11-13-2017 at 11:47 PM and includes a 'VOTE UP' button. The post text reads: 'Provide the option to find out last ladder number used in the project. When the new drawing is adding to project, there is no option to check what was the last ladder number to start from next number.' To the right of the post, there is a 'Submit Your Ideas' section with a 'SUBMIT AN IDEA' button, a 'Search This Ideas Board' section with a search bar, and an 'Idea Guidelines' section with a brief explanation of the guidelines.



**ACADE TRIVIA
CHALLENGE**

ACADE TRIVIA CHALLENGE

What is the command that allows you to see invisible attributes in a drawings?

ATTMODE/ATTDISP

ACADE TRIVIA CHALLENGE

I mentioned that we have a new DWG format in ACADE 2018, when was the previous format introduced?

2013

Questions



Be heard!

Provide AU session feedback.

- Via the Survey Stations, email or mobile device.
- Give your feedback after each session.
- Give instructors feedback in real-time.
- You get a chance to win great prizes!



Forget to take notes? No problem!

After AU visit:

AutodeskUniversity.com

Click on **My AU** to find:

Class Recordings

Presentations

Handouts

All of your sessions will be there
to enjoy again and again.



**Thank You So Much for Your
Attention!!**



WHO'S AWESOME?!
You're Awesome!



Autodesk and the Autodesk logo are registered trademarks or trademarks of Autodesk, Inc., and/or its subsidiaries and/or affiliates in the USA and/or other countries. All other brand names, product names, or trademarks belong to their respective holders. Autodesk reserves the right to alter product and services offerings, and specifications and pricing at any time without notice, and is not responsible for typographical or graphical errors that may appear in this document.
© 2017 Autodesk. All rights reserved.

